

## Grace Multiplied

Amy Sweet

**A** PIANO INTRO

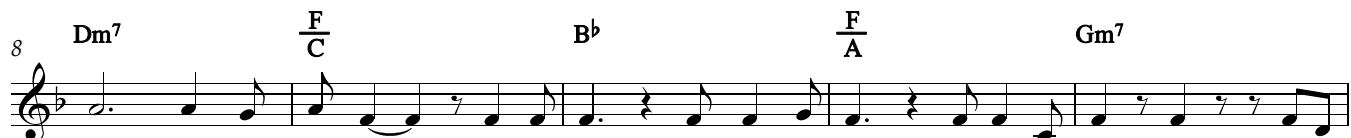
$B^b$   $\frac{F}{A}$   $Gm^7$   
 (♩. = 70) Emphasise 1st & 3rd beats

**B** VERSE

$F$   $\frac{Am^7}{E}$



See the One, See the Man-y. O-pen



door, Path made read-y, To the one who seeks to know the hid-den mys - t'ry of the



Lord. See the One, See Him emp-ty See the room, made for man-y Mul-ti-



- plied grace up - on grace grace up - on grace mul - ti - plied. See

**C** CHORUS

$F$   $\frac{Am^7}{E}$   $Dm^7$   $\frac{G^{\circ}}{D^b}$   $\frac{F}{C}$   $\frac{G^7}{B}$



Him! Seek His face, See Him lead you through the val-ley to a large and



o - pen place. See Him! Seek His face, Mul-ti - ply Lord Your grace to-ward



Your own peo-ple whose hearts op - en wide See the

**D** VERSE

$F$   $\frac{Am^7}{E}$   $Dm^7$   $\frac{F}{C}$   $B^b$



One, See the Man-y. O-pen door, Path made read-y, To the one who seeks to



know the hid-den mys - t'ry of the Lord. See the One, See Him emp-ty See the

© Amy Sweet 2009

c/- Brisbane Christian Fellowship Inc.

PO Box 240, Samford QLD 4520, AUSTRALIA

Ph: (07) 3289 2888

Email: bcf@bcf.org.au Web: www.bcf.org.au

Use and copy freely for non-commercial purposes.

MLC

53  $Dm^7$   $\frac{F}{C}$   $B^b$   $\frac{F}{A}$

room, made for man-y\_\_\_\_\_ Mul - ti - plied grace up - on grace grace up - on

**E** CHORUS

57  $Gm^7$   $C^7$   $F$   $\frac{Am^7}{E}$   $Dm^7$   $\frac{G^{\flat}}{D^{\flat}}$   $\frac{F}{C}$

grace mul-ti - plied\_\_\_\_\_

65  $\frac{G^7}{B}$   $Gm$   $C$   $F$   $\frac{Am^7}{E}$   $Dm^7$   $\frac{G^{\flat}}{D^{\flat}}$

72  $\frac{F}{C}$   $\frac{G^7}{B}$   $\frac{G^{\flat}}{D^{\flat}}$   $F$   $C$   $D$

**F** CHORUS

See

78  $G$   $\frac{Bm^7}{F^{\sharp}}$   $Em^7$   $\frac{A^{\flat}}{E^{\flat}}$   $\frac{G}{D}$

Him!\_\_\_\_\_ Seek\_\_\_\_\_ His face, See Him lead you through the val - ley\_\_\_\_\_ to a

83  $\frac{A^7}{C^{\sharp}}$   $Am$   $D$   $G$   $\frac{Bm^7}{F^{\sharp}}$   $Em^7$

large and o - pen place. See Him!\_\_\_\_\_ Seek\_\_\_\_\_ His face, Mul-ti -

89  $\frac{A^{\flat}}{E^{\flat}}$   $\frac{G}{D}$   $\frac{A^7}{C^{\sharp}}$   $\frac{A^{\flat}}{E^{\flat}}$

- ply Lord Your grace\_\_\_\_\_ to - ward Your own peo - ple\_\_\_\_\_ whose hearts o - pen

94  $G$   $\frac{Csus^4 C}{G G}$   $G$   $\frac{Csus^4 C}{G G}$   $G$   $\frac{Csus^4 C}{G G}$   $\frac{C}{G}$   $\frac{Cm}{G}$   $G$

wide